

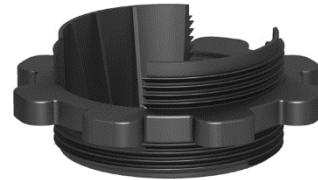
RDC-A

Adjustable Joist Cradle

Overview

The Adjustable Joist Cradle is a low-height plastic adjustable pedestal designed to support DS aluminium joists in decking, railing, paving, and other flooring systems in both external and internal applications.

- Side walls locate joists quickly and prevent joists from moving
- Adjustment ring gives millimetre-perfect adjustment up to a build-up of 55mm
- Finger grips enable easy adjustment



Details

Material	Recycled Nylon (glass filled)
Dimensions	Base size: 90mm (diameter)
Joist width capacity	44-50mm

Performance

Compressive strength	6kN/m ² (min. 6 cradles/m ²)
Allowable load	See “Compatible system” data
Maximum spacing	600mm centres
Biological and chemical	Resistant to moulds, algae, alkali, bitumen, UV
Warranty	10 years*

*when used as part of a complete RYNO system

Part information

Part code	Height range	Pack quantity
RDC-A 10-25	10-25mm	n/a
RDC-A 10-40	10-40mm	4050
RDC-A 10-55	10-55mm	3240

Got questions? Give us a shout.


Visit www.rynosystems.com or call us today on **+44 (0)203 967 3500** or reach out on sales@rynosystems.com

Compatible components

	DS Aluminium Joist		BRSP Base Rubber Shock Pad

Compatible systems

TerraSmart®
 Composite Decking System
 Wood-plastic composite decking system for outdoor spaces



TerraSmart®
 Rail Paving System
 Premium, versatile paving system for waterproofed substrates

Got questions? Give us a shout.

Visit www.rynosystems.com or call us today on **+44 (0)203 967 3500** or reach out on sales@rynosystems.com