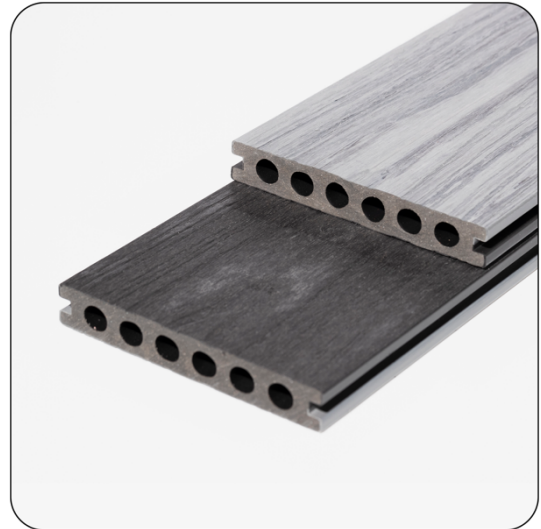


# Signature™ Composite Decking Board

## Overview

Signature™ capped wood-polymer composite (WPC) decking board has a timeless wood-grain appearance.

- Long-lasting: will not rot, warp or twist
- Non-slip and splinter-proof
- Low maintenance: no need to treat or stain
- Manufactured using certified timber



## Performance

Density – ASTM D792-13 Method B	1.19 g/cm <sup>3</sup>
Flexural strength – ASTM D790-10 Procedure A	34.5MPa
Flexural modulus – A	3510MPa
Izod unnotched impact strength - ASTM D4812-11	88 J/m (Complete break)
Shore hardness - With Ref to ASTM D2240-05 (2010)	D/70/1
Tensile strength - ASTM D638-14	24.9MPa
Water absorption – ASTM D570-98 (2010)	0.63%
Coefficient of linear thermal expansion (1/Co) ASTM D696-08	-30°C ~30°C: 33.12x10 <sup>-6</sup>
Slip resistance – (Pendulum Test) – Silver Birch & Teak	PTV (Dry) 49, PTV (Wet) 37 - Low risk of slip
Slip resistance – (Pendulum Test) – Mahogany & Ebony	PTV (Dry) 50, PTV (Wet) 37 - Low risk of slip
Reaction to fire – EN ISO 13501-1	C <sub>fi</sub> - s1

## Dimensions

Code	Width	Thickness	Length
Decking Board	142mm	22mm	3000mm

## Finishes



**Silver birch**



**Teak**



**Ebony**



**Mahogany**



**Sycamore**



**Willow**

## Accessories



**Bullnose board**

For neat finishing at edge of deck areas and step treads.



**Edge profile**

An alternative way of capping off-board ends/step treads

## Accessories (Cont.)



### Plastic T-clip

For a 6mm gap between boards



### Metal clasp

For a 4mm gap between boards



### Starter/End Clip

For fixing down decking at start and finish of decking areas



### Decking Screw - Black

3.9 x 30mm CK screw for Plastic T-Clips

## Compatible Systems

### **TerraSmart**<sup>®</sup>

Composite Decking System

Wood-plastic composite decking  
system for outdoor spaces