

# RBG

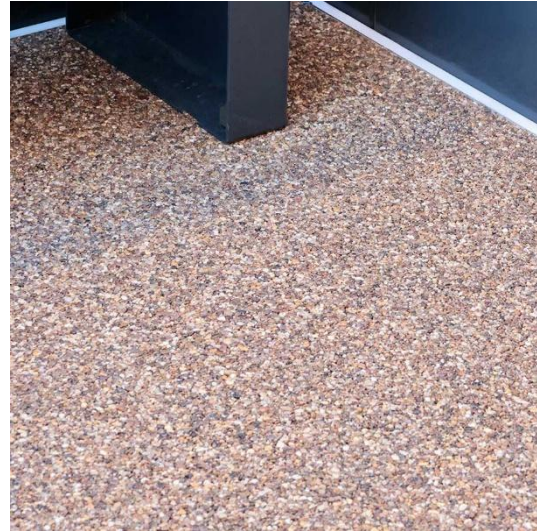
## Resin Bound Gravel Kit

### Overview

Resin Bound Gravel kit is a mix of aggregates bound together with a clear polyurethane resin. It is flexible, resistant to cracking, and porous. This prevents pooling water, and damage from freezing and thawing. It is available in an extensive colour range, enabling creative design. It is BRoof-t4 rated in accordance with BS EN 13501-5, making it suitable for use on roof terrace applications\*.

- 14 colours available
- Design flexibility
- Tested to BS EN 13501-5: BRoof t4 rated\*

\* When installed as part of a complete RYNO system



### Details

<b>Material</b>	Mixed aggregates Polyurethane resin screed Anti-slip glass grit
<b>Dimensions</b>	Kit size: approx. 3m2 Thickness: 25mm
<b>Weight</b>	41kg/m2

### Performance

<b>Reaction to fire (BS EN 13501-5)</b>	BRoof t4
<b>Slip resistance (BS 7976)</b>	Slider 96: PTV >52 (wet) Slider 55: PTV >52 (wet) Low Slip Potential
<b>Permeability/Porosity (BS EN 12697-40:2005)</b>	10mm @ 22mm depth = 17-30l/sec/m2

**Got questions? Give us a shout.**

Visit [www.rynogroup.co.uk](http://www.rynogroup.co.uk) or call us today on **+44 (0)203 967 3500** or reach out on [sales@rynogroup.co.uk](mailto:sales@rynogroup.co.uk).

## Finishes



**Breccia**



**Clay**



**Diorite**



**Flint**



**Granite**



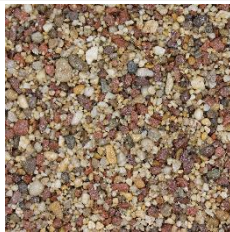
**Iron**



**Limestone**



**Pearl**



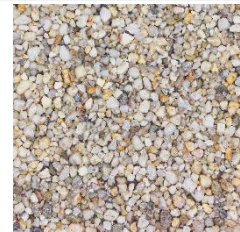
**Pebble**



**Pumice**



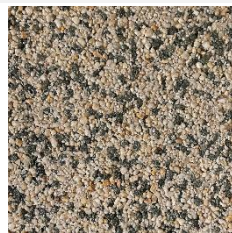
**Quartz**



**Sandstone**



**Schist**


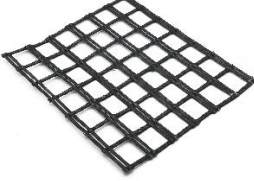



**Shale**

**Got questions? Give us a shout.**

Visit [www.rynogroup.co.uk](http://www.rynogroup.co.uk) or call us today on **+44 (0)203 967 3500** or reach out on [sales@rynogroup.co.uk](mailto:sales@rynogroup.co.uk).

### Compatible components

	<p><b>BP</b> Boundary Profile</p>		<p><b>SM</b> Stabilisation Mesh</p>
	<p><b>BB</b> Baseboard</p>		

### Compatible systems

**TerraSmart®**  
Resin Bound Gravel System

Raised, lightweight flooring system with a seamless resin bound aggregate finish.

**Got questions? Give us a shout.**

Visit [www.rynogroup.co.uk](http://www.rynogroup.co.uk) or call us today on **+44 (0)203 967 3500** or reach out on [sales@rynogroup.co.uk](mailto:sales@rynogroup.co.uk).