

RBG

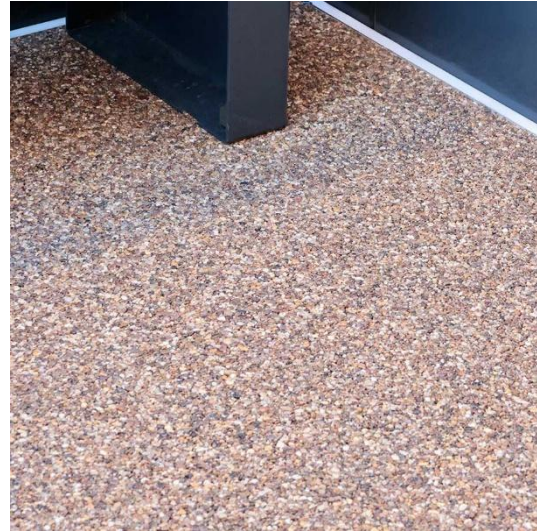
Resin Bound Gravel Kit

Overview

Resin Bound Gravel kit is a mix of aggregates bound together with a clear polyurethane resin. It is flexible, resistant to cracking, and porous. This prevents pooling water, and damage from freezing and thawing. It is available in an extensive colour range, enabling creative design. It is BRoof-t4 rated in accordance with BS EN 13501-5, making it suitable for use on roof terrace applications*.

- 14 colours available
- Design flexibility
- Tested to BS EN 13501-5: BRoof t4 rated*

* When installed as part of a complete RYNO system



Details

Material	Mixed aggregates Polyurethane resin screed Anti-slip glass grit
Dimensions	Kit size: approx. 3m ² Thickness: 25mm
Weight	41kg/m ²

Performance

Reaction to fire (BS EN 13501-5)	BRoof t4*
Slip resistance (BS 7976)	Slider 96: PTV >52 (wet) Slider 96: PTV >63 (dry) Slider 55: PTV >52 (wet) Slider 55: PTV >91 (dry) Low Slip Potential
Permeability/Porosity (BS EN 12697-40:2005)	10mm @ 22mm depth = 17-30l/sec/m ²

*when installed as part of a complete Ryno system

Got questions? Give us a shout.

Visit www.rynogroup.co.uk or call us today on **+44 (0)203 967 3500** or reach out on sales@rynogroup.co.uk.

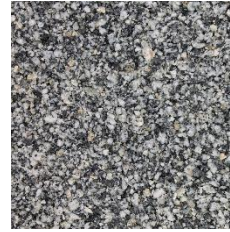
Finishes



Breccia



Clay



Diorite



Flint



Granite



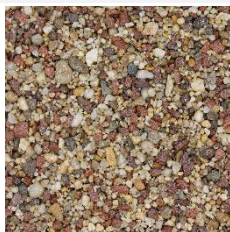
Iron



Limestone



Pearl



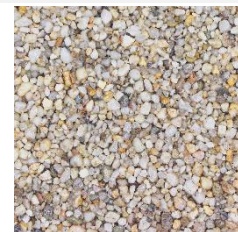
Pebble



Pumice



Quartz



Sandstone



Schist


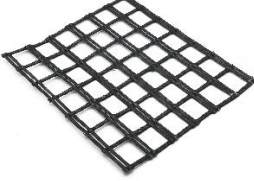



Shale

Got questions? Give us a shout.

Visit www.rynogroup.co.uk or call us today on **+44 (0)203 967 3500** or reach out on sales@rynogroup.co.uk.

Compatible components

	<p>BP Boundary Profile</p>		<p>SM Stabilisation Mesh</p>
	<p>BB Baseboard</p>		

Compatible systems

TerraSmart®
Resin Bound Gravel System

Raised, lightweight flooring system with a seamless resin bound aggregate finish.

Got questions? Give us a shout.

Visit www.rynogroup.co.uk or call us today on **+44 (0)203 967 3500** or reach out on sales@rynogroup.co.uk.