

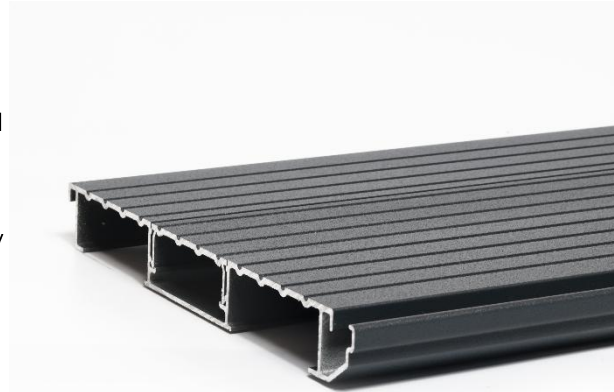
# DFB-DR

## Aluminium Decking Board - Direct Fix with Drainage



### Overview

The DFB-DR Aluminium Decking Board - Direct Fix with Drainage is a fully non-combustible aluminium decking board featuring a built-in drainage channel. Designed to be fixed directly to balcony steels via its wide clip-in channel, the board is available in various depths and a range of spans up to 1.5 metres. The DFB-DR decking board is versatile and allows for controlled drainage at deck level.



- Two-part design for fast installation to balcony steels
- Innovative built-in drainage channel allowing for independent board removal
- Qualicoat Seaside, Class 2 powder coating provides outstanding weather and wear resistance
- Highly durable and scratch-resistant, even in areas of high foot traffic
- Rigorously slip-tested and certified as low-risk of slip
- Boards are available in any RAL colour with 6 standard finishes. See finishes

### Details

<b>Material</b>	Aluminium 6063-T6
<b>Dimensions</b>	See "Part information"
<b>Height Range</b>	See "Part information"
<b>Weight</b>	See "Part information"
<b>Coating</b>	Qualicoat Class 2 textured powder coating

### Performance

<b>Reaction to fire (BS EN 13501-1)</b>	A2-s1,d0
<b>Durability</b>	Footfall (TM 391): Very slight wear after 100,000 Footfalls. See report for additional details. Furniture Leg (EN ISO 16581): No damage to surface. See report for additional details.
<b>Slip resistance (BS EN 7976)</b>	Classification: Low Slip Potential Slider 55 (Dry): >96 PTV Slider 55 (Wet): >37 PTV Slider 96 (Dry): >63 PTV Slider 96 (Wet): >41 PTV
<b>Coefficient of linear thermal expansion</b>	0.023mm/m/°C
<b>Performance - Allowable load</b>	Uniformly distributed >4.0kN/m <sup>2</sup> , concentrated 2kN
<b>Maximum Span</b>	See "Part information"
<b>Biological and chemical</b>	Resistant to moulds algae, alkali, bitumen, UV
<b>Warranty</b>	30 years*
<b>Design Life</b>	60 years

\*when used as part of a complete RYNO IGNO system

**Part information**

Code	Dimensions	Length	Weight	Maximum Span
<b>DFB60-DR</b>	200x25mm	Available in stock lengths or cut to length	2.276kg/m	600mm
<b>DFB100-DR</b>	200x30mm	Available cut to length	2.789kg/m	1000mm
<b>DFB120-DR</b>	200x30mm	Available cut to length	3.214kg/m	1200mm
<b>DFB150-DR</b>	200x40mm	Available cut to length	3.14kg/m	1500mm







**Finishes**

			
<b>RAL 7016</b> Anthracite Grey	<b>RAL 7037</b> Dust Grey	<b>RAL 7039</b> Quarts Grey	<b>RAL 7040</b> Window Grey
			
<b>RAL 8014</b> Sepia Grey	<b>RAL 8019</b> Grey Brown	<b>RAL 7016</b> UltraGrip	

**Got questions? Give us a shout.**

Visit [www.rynosystems.com](http://www.rynosystems.com) or call us today on **+44 (0)203 967 3500** or reach out on [sales@rynosystems.com](mailto:sales@rynosystems.com)

## Compatible components

	<p><b>ADC</b> Joist Support Cleat</p>		<p><b>DS</b> Aluminium Joist</p>
	<p><b>JH</b> Joist Hanger</p>		<p><b>HHS</b> Hex-head Screw</p>
	<p><b>FA</b> Furniture Anchor</p>		<p><b>T</b> Aluminium Support Rail</p>

## Compatible systems



**Got questions? Give us a shout.**

Visit [www.rynosystems.com](http://www.rynosystems.com) or call us today on **+44 (0)203 967 3500** or reach out on [sales@rynosystems.com](mailto:sales@rynosystems.com)